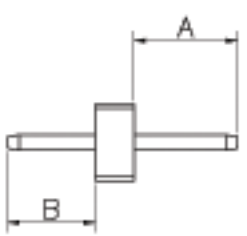
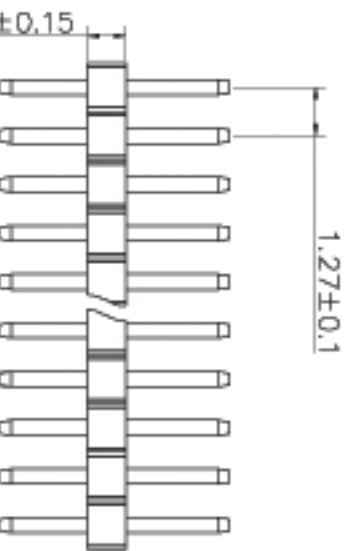
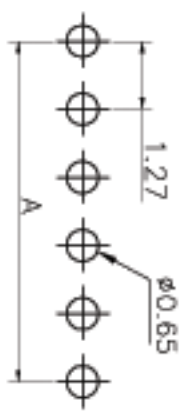


SPECIFICATIONS

Rated Current:1.0AMP
 Contact Resistance:20mΩ Max
 Withstand Voltage:500V AC/DC
 Insulation Resistance:1000MΩ Min
 Operation Temperature:-40°C to +105°C

Contact Material:Brass
 Contact Plating:Au or Sn Over Ni
 Insulator Material:Polyester(UL94V-0)
 Standard:PA6T

Recommended P.C.B Layout(Top Side)
 (PCB BOARD TOLERANCE±0.05)



Dimension	and/theses	Est.
ITEM	A	B
Standard	2.70	1.80
Alternate		

Ordering Information

1410 1 XX XX X S XXX 01

No. of Pins
 Part Row
 2x50
 2~100

Contact Plating
 GD:Gold Flash
 G2:5U" Gold
 G3:10U" Gold
 G4:15U" Gold
 G5:30U" Gold
 SD:Gold Flash/Tm
 SK:In

Insulator Material
 Option
 A=BK-FBT
 B=BK-PA66
 C=BK-PA6T
 D=BK-PA46
 F=BK-LCP

Pin Length
 L=A+B+1.0

Wellco T&C Co., Ltd.

OPERATION	DRAW	Yr Yu Sheng	12.03.21	SCALE	FIT	PART NO. 14101XXD0XSXX001
X.X	DESIGN			UNIT	mm	
X.XX	CHECK			SIZE	A4	TITLE: 1.27mm Pin Header Single Row
X.XXX	APPROVE			SHEET	1/1	
Angle	APPROVE			PROJ.	◆	Customer NO.
DIM	APPROVE					
TOL						

REV	DATE	MODIFICATION DESCRIPTION	CHANGE	APPROVE	DIM	TOL
A0	2012.03.21	NEW DRAWING	CHANGE	APPROVE		
			CHANGE	APPROVE		